

DAVID HANCOCK & CO AUCTIONEERS

SALE BY AUCTION

Furniture & Collectables

Saturday 25th September 2010 at 11:00



AUCTION OFFICE

Little Window
High Street
Moreton in Marsh
Gloucestershire
GL56 0LL

Tel: (01608) 650428
Fax: (01608) 650540

Mobile (Not during sale): 0789 992 7112

The Village Hall
Moss Lane, Newbold-on-Stour
Nr. Shipston-on-Stour
CV37 8TU.

Viewing Friday 24th September from 4-8 pm
& morning of the sale from 9am

Catalogues £2.00

www.davidhancock-co.co.uk

IMPORTANT

1. All lots will be sold subject to the Conditions of Sale as exhibited in the sale room.
2. All lots will be at the purchasers risk at the fall of the hammer.
3. **CHEQUES WILL NOT BE ACCEPTED FROM PERSONS UNKNOWN TO THE AUCTIONEER UNLESS PRIOR BANKING ARRANGEMENTS HAVE BEEN MADE.**
Intending purchasers wishing to pay by cheque must ask their bank to forward to us details of their credit worthiness stating the likely sum involved.
We do not accept debit or credit cards.
4. **NO LOTS TO BE REMOVED UNTIL PAID FOR.**
5. All lots to be removed on the day of sale before 6pm unless prior arrangements have been made with the auctioneers.
6. All lots purchased on commission must be collected and paid for by 6pm on sale day (unless prior arrangements have been made).

SUBSCRIPTIONS: £10.00 for 8 catalogues

ADVERTISEMENTS: These appear in the week prior to the sale as follows: Evesham Journal, Stratford Herald, and Antiques Trade Gazette.

CAR PARK: Adjacent to the Sale Room.

REMOVAL: Purchases must be removed on the day of sale by 6 p.m. The removal company J B S Services from Shipston-on-Stour Tel: 01608 661416 will be in attendance.
Due to increased costs any item taken back to our store for collection at a later date may incur a small charge.

REFRESHMENTS: By courtesy of Lisa of Lisa Hall Catering.

HOW TO FIND US: Situated by the side of the A3400 three miles north of Shipston-on-Stour and seven miles south of Stratford-on-Avon.

483. Grandfather clock in inlaid oak and crossbanded mahogany case with painted enamel dial—Samuel Simms of Chipping Norton.
484. Edwardian mahogany shaped front china display cabinet with drawers and cupboards under—36”.
485. Mahogany freestanding corner cupboard in Georgian style.
486. Edwardian inlaid mahogany china display cabinet—24”.
487. Grandmother clock in mahogany case with brass and steel dial in Georgian style—72”.
488. Mahogany freestanding corner cupboard with glazed top.
489. Carved panelled oak wardrobe—46”.
- 490.
491. Garden badminton set.
492. Clay chimney pot.
493. Ditto.
494. Ditto.
495. Ditto.

END OF SALE

**We hold regular sales of
Antique, Reproduction and Modern Furniture,
Silver, Plate, Jewellery, China, Porcelain, Glass, Pictures, Books,
Miscellanea, Collectables and Outside Effects**

**We also undertake valuations of chattels for Sale,
Insurance, Probate and Family Division.**

We have a considerable number of

**Postcards (including Titanic), Cigarette Cards,
Old Photographs and Ephemera**

To be included in a forthcoming sale.

Further entries welcome

BUYERS PREMIUM 10% PLUS VAT

457. Mirror with 9 bevelled panes 42" x 32"
458. Edwardian inlaid mahogany 2 seater settee with fretwork splats—57".
459. Mahogany chest of 4 drawers and brushing slide in Georgian style—31".
460. French style armchair with tapestry seat and back and bedroom armchair.
461. 19th Century mahogany bow fronted chest of 4 long drawers with brass drop handles—43".
462. Late 19th Century ebonised table with 2 end drawers, turned legs and stretcher base and with specially weighted feet though to be for use on a ship—36" x 18".
463. Victorian circular tripod table with chessboard top—19".
464. Inlaid mahogany banjo barometer with inlaid Masonic medallions.
465. Edwardian mahogany revolving bookcase.
466. Victorian mahogany Sutherland type dining table on turned legs—44" x 36".
467. Edwardian mahogany writing table with inset leather top, shelf to back and square tapering legs—42".
468. 19th Century circular oak table on tripod base.
469. Late Georgian mahogany dressing table mirror on box base with two drawers and flat bun feet—22".
470. Pair of circular inlaid mahogany late Victorian footstools with figured plush tops.
471. **Georgian oak hall table** with drawer, brass handles and escutcheons, tapering legs and pad feet—30" x 19".
472. Victorian nursing chair in mahogany frame and upholstered in red dralon.
473. **Antique of gate-leg dining table** on bobbin legs.
474. Stick barometer in inlaid mahogany case in Edwardian style by Comitti of London.
475. **Late Georgian "D" end mahogany dining table** on turned legs and brass castors with spare leaf extending to 73" x 46".
476. **19th Century Chinese lacquered foldover top card table** with top decorated scene with two figures and a deer approaching a Temple—33".
477. Yew-wood lounge unit comprising cupboard and shelved back—76".
478. Dark oak dresser with two drawers, cupboard under and rack over—44".
479. Dark oak freestanding corner cupboard with open shelved top.
480. Mahogany hall cupboard—27".
481. Freestanding corner wardrobe with mirror door—label Lee Longland, Birmingham.
482. **Inlaid and crossbanded oak and mahogany wide case clock**, 8 day with steel dial, painted enamel shell decorated corner and cattle motif to top—Dodson, Beeston.
1. Royal Worcester oven and table ware—36 pieces.
2. Quantity of Masons teaware.
3. Large brown and white "Nautilus" pattern meat dish and matching tureen with cover.
4. Floral jug and basin and Royal Doulton slop pail decorated orchids.
5. Set of sweet scales with brass weights and pans.
6. Collection of 5 decorative teapots and china cheese dish with cover.
7. Late 19th Century stow-away fort.
8. Late Victorian coal box.
- 9.
- 10.
11. Box of decorative china and glass.
12. Edwardian coal scuttle with shovel.
13. Collection of records spanning decades of the 20th Century including old 78's, LP's and singles including Acker Bilk, Elvis Presley, Billy Fury and The Temperance Seven.
14. Old large pestle and metal hand chopper with turned wooden handle.
15. 3 branch chandelier with brass drops.
16. Box of sundries including anniversary clock, plated toast rack, rose bowl, wine mats, etc.
17. Blue and white table china.
18. Pair of blue ground vases with panels depicting children and 5 other glass and china vases.
19. Staffordshire blue and white tureen with ladle and blue and white Staffordshire bowl.
20. Plated three piece tea service and other plated items.
21. Box of plated items.
22. Pair of circular metal wall plaques.
23. Box of plated items.
24. Box of metal ware.
25. Brass lantern light.
26. Copper kettle, brass mounted bellows and brass wheatsheaf doorstep.
- 27.
- 28.
- 29.
- 30.

31. Brass oil lamp with opaque glass shade.
32. Copper kettle.
33. Brass trivet and sundry metalware.
34. Set of 3 brass fire irons and brass toasting fork.
35. 2 brass piano sconces.
36. Brass apothecary scales and weights on mahogany base with drawer.
37. 19th Century bronze and cloisonné vase—14½”.
38. 2 copper funnels.
39. Milner's stong box with working key 13” x 8” makers name engraved on handle.
40. Grey patinated stylised bronze figure of a rabbit probably from the 1930's.
41. Gilt decorated seal embossing press by Shaw and Blake, Temple Bar, Birmingham. Impressed Harper and Tunstall Ltd.
42. Carved wooden bear with shelf.
43. 1940's push-along dog with glass eyes.
44. Inlaid bread basket with porcupine quill sides.
45. Mantel clock in walnut case.
46. Edwardian ebonised dressing table items.
47. Pair of brass candlesticks.
48. Plated tray and 4 piece copper plated tea service.
49. Oil lamp with blue reservoir and metal base.
50. Brass scales on mahogany base with drawer plus brass weights.
51. Old Kodak Compur folding camera with plates and Brownie No. 2a folding auto-graphic camera in leather case.
52. Kodak Junior Six 20 folding camera and Kodak Retina camera in case.
53. Modern mahjong set in case.
54. Single antique brass candlestick with petal shaped base—6½”.
55. Copper warming pan with turned wooden handle.
56. Cantonese bowl—11” diameter.
57. Collection of cups and saucers including Herrend, Wetley and Wedgwood.
58. 19th Century oval Wedgwood dish decorated flowers, Late Copeland Spode;s Newstone dish and small willow pattern bowl.
59. Victorian medicine bottle with stopper labelled Vin.Ant. P-T.
60. Paragon “Holyrood” tea and dinner service.
61. Royal Albert “Violetta” teaware—39 pieces.
62. Crested china including Arcadian gunboat and Norfolk Crest ambulance.
427. Oak draw leaf dining table and 4 chairs.
428. Nest of three oak tables.
429. Oak chest of three drawers—36”.
430. Oak bureau with three drawers—39”.
431. Early 20th Century sideboard with mirror back—39”.
432. Octagonal wall mirror in oak frame.
433. Victorian mahogany chest of 2 short and 3 long drawers—39”.
434. Ditto—40.
435. Oblong mirror in gilt frame and oval ditto.
436. Edwardian American shelf clock in mahogany case.
437. Victorian crossbanded mahogany wall clock (no glass).
438. Edwardian inlaid mahogany armchair with spindle back.
439. Edwardian inlaid mahogany side chair & Regency sabre leg cane seated dining chair.
440. Velvet stool on walnut cabriole legs.
441. Windsor lath back armchair in elm.
442. Late Georgian mahogany bedside cabinet with tray top—14”.
443. Circular mahogany occasional tale on turned pillar and tripod base—20” diameter.
444. William IV mahogany armchair and similar dining chair both with drop in seats.
445. Cane office chair.
446. Oak bedside table with marble top.
447. Habitat roll top desk with pigeon holes.
448. 5 drawer music cabinet.
449. 1930's oak gate-leg dining table with barley twist legs 52” x 37”.
- 450.
451. 19th Century wall mirror in gilt metal frame with acanthus leaf corners and twin candle sconce to top—14” square.
452. Late 19th Century Continental oval bevelled glass wall mirror in blue and white porcelain frame decorated putti, ribbons and floral.
453. Three piece lounge suite in buttoned beige upholstery.
454. Electric recliner chair in rust upholstery.
455. Oak extending dining table with bulbous pillar supports and stretcher base 82” x 34” (54” x 34” closed).
456. Set of 6 (carver and 5) oak dining chairs with studded seats and backs.

- 396.** Walnut dining room suite comprising extending dining table 60" x 33", 4 chairs and sideboard with two central drawers and side cupboards—55".
- 397.** Pair of Chinese blue and white electric lamps decorated birds and flowers.
- 398.** Carved hardwood lamp with figure of fisherman.
- 399.**
- 400.**
- 401.** Nest of three reproduction oak coffee tables.
- 402.** Oak coffee table 36" x 19".
- 403.** Three piece cottage suite in floral upholstery.
- 404.** Pair of single divans with interior spring mattresses.
- 405.** 2 white bedroom chests of drawers.
- 406.** White bedroom chest of 2 long & 2 short drawers & bedroom chest of 3 drawers.
- 407.** Oak refectory style dining table 60" x 32" and 4 ladder back chairs.
- 408.** Oval mirror in gilt metal frame and mirror in plush frame.
- 409.** Oak 2 drawer chest.
- 410.** Small freestanding corner cupboard with open shelved top.
- 411.** Mahogany 3-tier whatnot with drawer to base—26".
- 412.** Half moon side table, occasional table and tripod table.
- 413.** Open fronted oak bookcase with cupboard under—33".
- 414.** Oak hall table with drawer.
- 415.** Heavily carved Eastern camphorwood chest.
- 416.** Ditto.
- 417.** Metal bound cedarwood campaign chest with two locks.
- 418.** Reproduction oak low dresser with mitred panel drawers—46"
- 419.** Mahogany kneehole writing desk with central and 8 side drawers and tooled leather top—46".
- 420.** Inlaid mahogany tub armchair.
- 421.** Mahogany occasional table in form of miniature sofa table.
- 422.** Oak occasional table with barley twist legs.
- 423.** Victorian pine clerks desk with inkwell, side flaps and stool.
- 424.** Mahogany music Canterbury in Regency style.
- 425.** Elm box.
- 426.** Edwardian settee in carved frame in red dralon.
- 63.** Royal Doulton plate Under the Greenwood Tree.
- 64.** Decorative items including glass bell, china cased clock, Adderly cup & saucer, Coalport floral dish and china jam pot, Wade ogee mug labelled Tonic.
- 65.** Vaseline glass dish with fluted edge to top, bowl and sundry ornaments.
- 66.** Heavy cut glass flower vase.
- 67.** Silver mounted Doulton Lambeth jug depicting country pastimes—London 1896 and one other Doulton style jug.
- 68.** 13 crested china items.
- 69.** Devonia Art liner converted to troop carrier No. 213 (rare).
- 70.** Royal Worcester Royal Garden tea ware: teapot, jug, sugar bowl, 4 cups, 4 saucers and 4 plates.
- 71.** Staffordshire cheese dish with cover, hexagonal jug, biscuit barrel & blue and gilt jug.
- 72.** Pair of Masons Ironstone jugs and smaller matching jug a.f.
- 73.** Glass compot, oval glass bowl, circular glass bowl and glass biscuit barrel.
- 74.** Blue and white Staffordshire meat dish and blue and white tureen with cover.
- 75.** A pretty Dresden shaped bowl with floral decoration.
- 76.** 9 matching dessert plates with green and gilt borders and floral panels.
- 77.** Box of decorative china including spill vase with boy on a swing, eggstand, china compot with swans, etc.
- 78.** Cranberry glass jug with decorative overlay.
- 79.** 25 items of crested china including Goss, Foley, Arcadian, Carlton, Grafton, etc.
- 80.** Royal Bonn Delft blue and white china cased mantel clock.
- 81.** Wedgwood Susie Cooper Poppy design coffee set 25 pieces.
- 82.** 2 circular and 1 oval shaped Bavarian dishes with rose decoration.
- 83.** Pair of small ebony candlesticks.
- 84.** Green swan dish.
- 85.** Assorted Royal Worcester china bowls, jugs, pin trays, etc.
- 86.** China honey pot, strawberry dish with sugar bowl and cream jug, jug a.f.
- 87.** Pair of Waterford crystal salt and pepper pots.
- 88.** Miscellaneous to include early 20th Century powder bowl with hinged over, Prinknash 1930's cup and saucer, fishing reel, ormolu door plates, pair of carved hardwood book-ends, Crown Ducal wall vase, etc.
- 89.** Late 19th Century Copeland Late Spode massive bowl with fluted gilded rims and decorated in Imari colours.
- 90.** Six late 19th Century Bohemian sliced and gilded tots.

- 367.** Nest of 3 oak occasional tables.
- 368.** Coffee table with gilt and cream painted base.
- 369.** Circular teak coffee table with inset glass top—33" diameter.
- 370.** Stag wardrobe—36".
- 371.** Stag dressing table—60".
- 372.** Pair of Stag bedside chests.
- 373.** Cream and gilt standard lamp.
- 374.** Oval mirror in ornate gilt frame and one other.
- 375.** Oval oak gate-leg dining table with turned legs 33" x 26".
- 376.** 2 seater settee with geometric design upholstery and wooden frame base.
- 377.** Low seated armchair with ladderback and seagrass seat and 1 other low seated armchair.
- 378.** Oak tea trolley.
- 379.** Shelved wall cupboard.
- 380.** Pine wall cabinet.
- 381.** Teak table with 2 inset tables and trolley 42" x 17".
- 382.** Edwardian dressing chest with 2 long and 2 short drawers, trinket drawers and triple mirror—42".
- 383.** Edwardian chest of 2 short and 3 long drawers—42".
- 384.** Artists easel.
- 385.** Single electric adjustable divan and mattress.
- 386.** Stressier design recliner chair with stool in beige dralon.
- 387.** Victorian style armchair in buttoned mushroom dralon.
- 388.** Low armchair with turned columns and carved back rail in pink dralon.
- 389.** Early 19th Century mahogany frame cheval mirror.
- 390.** Victorian mahogany drop flap dining table 50" x 38".
- 391.** Oak table with drawer—label Boodle and Dunthorpe.
- 392.** Edwardian inlaid mahogany washstand.
- 393.** Single mahogany dining chair in Hepplewhite style.
- 394.** Mahogany occasional table with two side shelves with spindle columns and shelf under - 24" x 15".
- 395.** 19th Century wall mirror in ornate shell and scroll frame.

- 91.** Early 19th Century pottery blue and white tureen and cover "Antique Scenery Series" Scenes of Hexham Abbey.
- 92.** Red glass flower vase, pair of turquoise gilded vases and Victorian pink opaline and filled glass bow.
- 93.** Continental Loetz type all over decorated pink glass vase.
- 94.** An unusual 19th Century Satsuma vase with inverted pierced rim decorated figures in landscape.
- 95.** 19th Century copper lustre jug with decorative blue bands, pair of ditto copper lustre goblets.
- 96.** Pair of late 19th Century Japanese cloisonné vases, one a.f.
- 97.** Set of three green glass wines with engraved bowls together with four other wines with coloured bowls.
- 98.**
- 99.**
- 100.**
- 101.** Fine Pilkington Lancastrian mottled glazed bowl.
- 102.** Davenport blue glazed vase with two handles and raised floral decoration.
- 103.** 19th Century cranberry/ruby glass carafe.
- 104.** Early 19th Century pink lustre teapot with lid decorated with scenes of buildings with three similarly decorated cups and saucers.
- 105.** Teapot with lid profusely decorated with flowers and foliage probably Colebrookdale circa 1860-70.
- 106.** Morano glass dog with blue collar and eyes.
- 107.** Large two handled Oriental vase probably Japanese painted overall with figures, birds and flowers.
- 108.** Various Victorian coloured glassware.
- 109.** Quantity of Wedgwood lidded trinket boxes, vases and trinket trays.
- 110.** Victorian Staffordshire pastille burner cottage with flowers around the door.
- 111.** Collection of stemmed cranberry glasses.
- 112.** Spode's Byron coffee set: coffee pot, cream jug, 6 coffee cans and saucers.
- 113.** Royal Worcester "Woodland" coffee ware: coffee pot, cream jug, sugar bowl, 6 cups and saucers.

- 334.** Walnut triple fitted wardrobe—59".
- 335.** Matching kneehole dressing table—46".
- 336.** Matching compactum —31".
- 337.** Matching bedside cupboard.
- 338.** Oak double panel wardrobe—46".
- 339.** Matching dressing table with central and 4 side drawers—43".
- 340.** Matching dressing chest with 2 drawers and a mirror—43".
- 341.** Oak cupboard with drawer to match previous lot—30".
- 342.** Double panel end bedstead.
- 343.** Oak bureau with three drawers—31".
- 344.** Footstool with tapestry seat.
- 345.** Lloyd loom style chair and kidney shape box stool.
- 346.** Upholstered ottoman.
- 347.** Late Victorian prie dieu style chair.
- 348.**
- 349.**
- 350.**
- 351.** Pine three tier shelf.
- 352.** Oak tea trolley and 1 other trolley.
- 353.** Low seated ladderback chair and pair of single bedroom chairs.
- 354.** Walnut bedside table with drawer.
- 355.** Oak framed open armchair.
- 356.** Oval mirror in inlaid mahogany frame.
- 357.** Teak semi-fitted wardrobe with mirror door.
- 358.** 2 Lloyd loom style chairs.
- 359.** Pair of circular oak occasional tables.
- 360.** Telephone table/seat.
- 361.** Open fronted hardwood bookcase.
- 362.** Ceylonese hardwood whatnot with two drawers.
- 363.** Edwardian piano stool.
- 364.** Oak two tier tea trolley.
- 365.** Ceylonese carved hardwood table decorated flowers and fruit on folding stand.
- 366.**
- 114.** Royal Doulton "Chateau Rose" tea ware: teapot, milk jug, sugar bowl, 6 cups, 6 saucers and 6 side plates.
- 115.** Silver embellished green glass cups and saucer, Carlton ware green and gilt cup, Royal Worcester saucer, pair of gilt edged liqueur glasses, Royal Worcester pin tray, Royal Worcester lily coffee can, Spode ditto a.f. and blue and white willow pattern cup.
- 116.** Pink opaque glass dish with frilled edge, one other coloured glass bowl and Vase-line glass with fluted top.
- 117.** Pair of Royal Vienna blue ground bulbous jars with gilt decoration and floral panels.
- 118.** 2 blue glass bowl and blue glass vase.
- 119.** Bulbous lidded jar inscribed B.W. and one other Belgian Studio vase.
- 120.** Cylindrical vase depicting hunting scene.
- 121.** Norman Stuart Clarke iridescent purple and yellow globular bowl, signed.
- 122.** Moorcroft bulbous vase decorated dandelions initialled WM 123/250 and small oblong Moorcroft dish.
- 123.** Pair of Copenhagen dishes depicting birds.
- 124.** Pair of Wedgwood floral plates.
- 125.** 2 Masons Ironstone jugs.
- 126.** Royal Worcester jug Shakespeare, Wedgwood jug and Edge Malkin and Co vase decorated primroses.
- 127.** Collection of glass.
- 128.** Pre-revolution Russian bowl with cover on stand, gold ground and painted with a design of military trophies formerly the property of a nobleman a.f.
- 129.** Edward VIII gilt decorated vase with portrait of the King on one side and dimpled effect on the opposite side giving 7 images.
- 130.** Volstedt Beyer and Boch cream jug decorated birds in landscape, silver lustre jug and Wedgwood milk jug.
- 131.** 8 Ashworth Ironstone cups and saucers c 1890-1900.
- 132.** Very rare probably 19th Century Siamese bowl and cover Buddha and frames, etc.
- 133.** Adolphus Rex (Helena Wolfen) chocolate cup and cover.
- 134.** 2 Ridgway plates.
- 135.** 19th Century Satsuma vase.
- 136.** 19th Century porcelain basket decorated flora by John Bevington.

- 137.** Lalique plate 1973 engraved "L. France" in original box.
- 138.** Chamberlains Worcester botanical plate.
- 139.** 3 Copeland and Garrett cups and saucers c1830.
- 140.** Parian bust of Victorian gentleman.
- 141.** Wedgwood cream colour Bournvita pot—marked Bourn-Vita Set by Wedgwood Reg. No. 798848.
- 142.** Oblong glass decanter with stopper with colourful floral design and green medicine bottle with stopper.
- 143.** French yellow ground porcelain casket decorated with flora and gilded.
- 144.** Set of late 19th Century dessert/cake plates 12 plus one server with decoration after Angelica Kaufman.
- 145.** 4 framed potlids.
- 146.** Victorian Minton blue and white tureen with cover on stand, cover a.f.
- 147.** Mid 19th Century multi coloured glass in the shape of a large pipe.
- 148.** Blue and white vase with cover Chinese seal mark on base.
- 149.**
- 150.**
- 151.** Royal Worcester white bone china lettuce leaf jug.
- 152.** Dresden narrow neck vase with painted figures and floral panels.
- 153.** Large brown pottery casserole with cover 12" diameter possible Winchcombe pottery.
- 154.** Tall glass storage jar with cover.
- 155.** Tuscan ware 1930's dressing table set comprising: tray, 2 covered bowls, pair of candlesticks and small pin dish.
- 156.** Novelty teapot and cover in the form of a group of Russian soldiers in front of a fire by a Christmas tree.
- 157.** Royal Crown Derby plate in typical Imari colours, large blue bread dish, Wedgwood botanical plate a.f. and two Chinese porcelain plates.
- 158.** 5 Wedgwood plates kite mark—January 1863.
- 159.** Pair of 19th Century plain decanters with target stoppers.
- 160.** A large antique Chinese storage jar with straw glazed dragon decoration.
- 161.** 1920's/1930's cut glass basket.
- 162.** Large red witches ball and smaller gold ditto.
- 163.** Arcadia crested china viz: British Tank (Grantham); Cannon (Thetford); Cannon (City of Worcester); Cannon Shell (Salisbury); Monument (City of London).
- 304.** Oil on canvas "Cottage" in landscape by Leonard G. Stephens.
- 305.** Oil on board Farm Buildings in landscape by William Brassington and pair of small oils on board by D. Abrams.
- 306.** Belgian wall tapestry.
- 307.** Oil on panel one man seated and others standing.
- 308.** Pr of drawings Royal Street & Preservation Hall, New Orleans signed Daley or Davey.
- 309.** Assorted pictures.
- 310.** Ditto.
- 311.** Limited edition print Vase of Flowers, signed DYF No. 280/500.
- 312.** Pair of watercolours Mediterranean Scenes in oval frames.
- 313.** 6 framed coloured French nursery rhyme prints.
- 314.** Framed print of Bedfordshire, horse portrait by Chadfield, silk embroidered picture and other pictures.
- 315.** Oil on canvas Lake Scene with mountain in the background and figures by tree trunks in the foreground, signed A. Pick (Anton Pick 1840-1902) - 29" x 40".
- 316.** Oil on panel depicting two girls seated by a tree 7" x 5½" in gilt frame.
- 317.** Palette painting of flowers—initials indistinct 29" x 19".
- 318.** Impressionist picture of Old Ibiza by Samantha Hayward.
- 319.** Palette painting on canvas of street scene with steps and figures.
- 320.** 3 Redoute rose prints and other small pictures.
- 321.** Turkish patterned tribal rug 9'6" x 6'6".
- 322.** Smaller ditto.
- 323.** 4 small Eastern style mats.
- 324.** Persian style patterned runner.
- 325.** Chinese carpet, pink ground and floral design 8' x 5'.
- 326.** Crocodile skin.
- 327.** Three bedroom rugs.
- 328.** Box of textiles.
- 329.** Christening robes, gowns, etc.
- 330.** Lady's clothes from the 1920's/30's viz: Coat, 2 dresses and a bodice.
- 331.** 2 old christening robes and a blouse.
- 332.** Victorian christening robe.
- 333.** 2 old shawls with knotted and fringe ends.

- 280.** China and Porcelain Figures
- 281.** Mahogany case containing 12 pairs of floral engraved tea knives and forks with bone handles.
- 282.** Assorted beads, lady's watches and costume jewellery.
- 283.** Three stone diamond ring mounted in 18ct gold and platinum in a Goldsmith and Silversmith Company box.
- 284.** Silver watch chain.
- 285.** Lady's 14k gold fob watch.
- 286.** Box of assorted jewellery.
- 287.** Lady's compact c1930.
- 288.** Late 19th Century mother-of-pearl cufflinks and stud set.
- 289.** Box of costume jewellery approx 50 items plus lady's watches.
- 290.** Nimrod's Hunting Tours—illustrated volume and Sporting Verse by Adam Lindsay Gordon—I volume illustrated by Lionel Edwards.
- 290a.** Royal Heritage by J.H. Plumb and Huw Weldon and the AA Complete Book of British Birds.
- 291.** A collection of racing books including Peter O'Sullivan, Ken Oliver, Alex Bird, Lester's Derby, Fred Archer plus Cheltenham Racing Badges and 3 Martell Aintree Racecards.
- 292.** English Sporting Prints by F.L. Wilder.
- 293.** 3 volumes: Illustrated History of Antiques, Huon Mallien plus two racing books.
- 294.** Badminton Library: Big Game Shooting Vols 1 & 2 and Racing Steeple-Chasing plus 6 others of equine interest.
- 295.** 19th Century embroidery "Princes in Tower" in ornate gilt frame.
- 296.** Watercolour of Snowy Owl by Spencer Hodge.
- 297.** Framed coloured print of Flowers—Nadia Bluois.
- 298.** Framed coloured print of Sheep at Church signed Lesley Holmes and Garden scene by Peter Strachan.
- 299.** Watercolour of Chipping Campden signed David Birch.
- 300.** Limited edition print Blackberry Time signed Harold Sayer.
- 301.** Large coloured print "Roebuck" by Patrick Oxenham and "Fox" by the same artist.
- 302.** Watercolour village scene signed B. Houghton, Church Scene by H. Robinson, Church picture and Pond scene.
- 303.** 2 small paintings on glass "Flowers" and landscape by Margaret Stow in maple frame.
- 164.** Royal Copenhagen heron No. 532.
- 165.** Ditto No. 3002.
- 166.** Royal Doulton long haired cat.
- 167.** Royal Copenhagen mouse.
- 168.** Herrend grasshopper.
- 169.** Royal Doulton The Jester No. 2016.
- 170.** Beswick cockerel Leghorn No. 1892.
- 171.** Royal Worcester India No. 3071 by Doughty.
- 172.** Royal Worcester Burmah No. 3068 by Doughty.
- 173.** Pair of Royal Worcester Hadley Collection Regency lady and gentleman.
- 174.** Pair of Royal Worcester horse's heads Astrope and Pyreois.
- 175.** Royal Worcester Shorthaired cat. No. 3616 by Doughty.
- 176.** Bewsick Labrador golden brown glass by Arthur Gredington and Border Fine Art small dog.
- 177.** Beswick highland calf.
- 178.** Beswick foal.
- 179.** Staffordshire glazed pottery figure Bill Waters—repro.
- 180.** Beswick racehorse Quarter Horse. Legs broken and repaired and smaller race-horse possibly Beswick.
- 181.** Pair of Staffordshire dogs.
- 182.** Royal Worcester Linnets No. 3365 and Albany Sparrow.
- 183.** 3 Royal Worcester candle snuffers: 2 modelled as a nun and the other as a monk reading.
- 184.** Porcelain figure of Jono and the Peacock, Derby 1773.
- Beswick Beatrix Potter figures
- 185.** Tabatha Twitchett. BP-2 First Version, Arthur Gredington.
- 186.** Cecily Parsley. BP-2 First Version. Arthur Gredington.
- 187.** Mr. Alderman Ptolemy. BP-3a. Graham Tonge.
- 188.** Mr. Jeremy Fisher. BP-2 First Version. Arthur Gredington.
- 189.** Ribby. BP-2. Arthur Gredington.
- 190.** Tom Kitten. BP-2. First Version. Arthur Gredington.
- 191.** Flopsy Mopsy and Cottontail. BP-3b. Arthur Gredington.
- 192.** Lady Mouse. BP-2. Arthur Gredington.

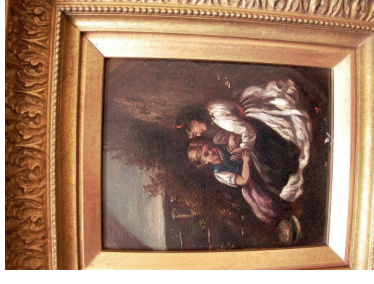
193. Samuel Whiskers. BP-2. Arthur Gredington
194. Samuel Whiskers. BP-3a. Arthur Gredington.
195. Sally Henny Penny. BP-3a. Albert Hallam.
196. Simpkin. BP-3a. Alan Maslankowski.
197. The Old Woman Who Lived in a Shoe. BP-2. Colin Melbourne.
198. Timmy Tiptoes. BP-2. Second Version. Arthur Gredington.
199. Squirrel Nutkin. BP-2. First Version. Arthur Gredington.
200. Foxy Whiskered Gentleman. BP-2. First Version. Arthur Gredington.
201. Anna Maria. BP-2. Albert Hallam.
202. Little Piggy Robinson. BP-2. First Version. Arthur Gredington.
203. Mr. Benjamin Bunny. BP-2. First Version. Arthur Gredington.
204. Pickles. BP-3a. Arthur Hallam.
205. Pig-Wig. BP-3a. Albert Hallam.
206. Apple Dapply. BP-3a. First Version. Albert Hallam.
207. **Duchess with Flowers.** BP-2. Graham Orwell.
208. Aunt Petitoes. BP-2. Albert Hallam.
209. Tommy Brock. BP-2. First Version, Second Variation. Graham Orwell.
210. Mrs. Tiggy Winkle. BP-2. First Version. Arthur Gredington.
211. Goody Tiptoes. BP-2. Arthur Gredington.
212. Hunca Munca. BP-2. Arthur Gredington.
213. Cousin Ribby. BP-2. Albert Hallam.
214. Old Mr. Brown. BP-2. Albert Hallam.
215. Timmy Willie from Johnny Town Mouse. BP-2. Arthur Gredington.
216. Miss Moppett. BP-2. First Version. Arthur Gredington.
217. Mrs. Rabbit. BP-2. First Version. Arthur Gredington.
218. Amiable Guinea Pig. BP-2. Albert Hallam (slight chip on ear).
219. Collection of 8 figures all as found: Benjamin Bunny, Jermima Puddleduck, Johnny Town Mouse, Peter Rabbit, Mrs. Tittle Mouse, Mrs. Flopsy Bunny, Piglin Bland and Tailer of Gloucester.
220. Mrs. Rabbit Cooking. BCF 13.
221. Royal Albert figures: Mrs. Bunnykins, Tailer of Gloucester, Mrs. Tiggy Winkle Takes Tea and Lady Mouse Made a Curtsey.
Royal Worcester
222. Royal Worcester floral decorated vase a.f.



LOT 250



LOT 315



LOT 316



LOT 471



LOT 475



LOT 476

- 223. Royal Worcester flat back jug with gilt edging and rose decoration No. 1094 signed M. Hunt. 1935. 4¼".
- 224. Pair of Royal Worcester China Works gilt edged cream spill holders.
- 225. Royal Worcester primrose plate and 2 decorated saucers.
- 226. Hand painted blue and white tea bowl possibly Worcester.
- 227. Pair of Royal Worcester hand painted wall plates depicting birds: The Blue Winged Sivas and the Blue Grey Gnatcatcher.
- 228. Pair of Royal Worcester white china lettuce leaf moulded jugs.
- 229. Royal Worcester china plate Harewood.
- 230. Royal Worcester white china tusk jug Model 1116.
- 231. Pair of Royal Worcester floral decorated jars "Florina" on knurled feet.
- 232. Royal Worcester white porcelain horse's head vase.
- 233. Pair of Royal Worcester Locke and Co. gilt edged bowls decorated birds.
- 234. Royal Worcester China Works pink bowl.
- 235. Royal Worcester rose decorated vase 1907. 5½".
- 236. Royal Worcester tusk shaped jug No. 1116. decorated floral. 1899.
- 237. Ditto decorated roses. 1909.
- 238. Pair of Royal Worcester urn shaped vases decorated flora. 1902/3.
- 239. Royal Worcester narrow neck vase FHI 11. 1924. 6½".
- 240. Pair of Royal Worcester china leaf dishes.
- 241. Royal Worcester white ground vase in form of a shell.
- 242. Small blue and white leaf dish with blue crescent mark.
- 243. Royal Worcester two-handled mug with floral decoration. 1904.
- 244. Royal Worcester shell porcelain cup and saucer with applied flowers. 1884.
- 245. **Royal Worcester bowl** decorated apples & grapes, signed Ricketts. 1923. 5½ dia.
- 246. **Pair of Royal Worcester two handled vases** with covers, on square bases, decorated apples, blackberries, plums and grapes, signed Leaman. No. 2363. 8½".
- 247. German doll for restoration AM 996.
- 248. Marble mantel clock.
- 249. 2 Stevengraphs "Ye Ladye Godiva" and "The Lady Godiva Procession" and one other woven picture depicting statue of Lady Godiva on Horse by J.& J. Cash Ltd of Coventry.



LOT 207



LOT 233



LOT 245



LOT 174



LOT 239,223 & 235



LOT 243

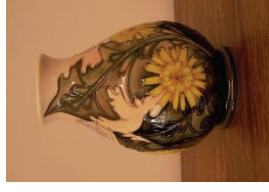
- 250.** Victorian coromandel and brass bound writing slope 14" x 10".
- 251.** French brass carriage clock—4½".
- 252.** ivory/bone model temple with Buddha enclosed—7".
- 253.** Circular lacquered wooden box with decorative lid with reclining semi-clad female form with French verse below—3½".
- 254.** Brass mounted spirit level—J. & D. Smallwood of Birmingham.
- 255.** Brass carriage clock— 4½".
- 256.** Old mahjong set in case—Kwaidhy & Co. plus boards and cloths.
- 257.** Miniature mahogany bureau made in Georgian style with three drawers.
- 258.** Rosewood tea caddy.
- 259.** 8 day striking mantel clock in mahogany case.
- 260.** Old abacus and old polished wooden cribbage board.
- 261.** Walking stick with silver handle and with floral decoration Birmingham 1871.
- 262.** Stylised plaque in relief depicting three cherubs and with inset metal medallion on reverse marked "Perfugium Regibus".
- 263.** Plated entrée dish and cover.
- 264.** Canteen of assorted plated cutlery.
- 265.** Oval plated tray with pierced gallery.
- 266.** Circular plated tray with cast grapevine border and 1 other circular plated tray with pierced gallery.
- 267.** 19th Century French plated fruit basket decorated oak leaves and acorns.
- 268.** 14 white metal and silver decorative spoons, 7 with enamelled handles, together with a pair of silver sugar tongs.
- 269.** Three matching plated candlesticks.
- 270.** Set of 6 silver gilt coffee spoons, Sheffield.
- 271.** Oak case with 6 pairs of plated tea knives and forks.
- 272.** Silver sugar caster Birmingham 1928.
- 273.** Collection of plated spoons, souvenir spoons and other cutlery.
- 274.** Pair of Georgian silver salt spoons and 7 other silver spoons.
- 275.** Silver whistle London 1892.
- 276.** Assorted plated cutlery incl mother-of-pearl handled fish knives and forks.
- 277.** Silver cream jug on three shell and pad feet London 1937.
- 278.** Mother-of-pearl fruit knife with silver blade, fruit knife with tortoiseshell handle, collection of bone cocktail sticks, etc.
- 279.** Mappin & Webb three piece condiment set in case with mustard & salt spoons. 1936.



LOT 117



LOT 121



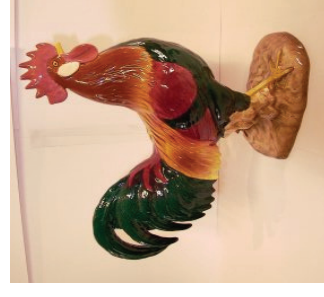
LOT 122



LOT 164 & 165



LOT 169



LOT 170