



310



311



313



366



153



376



387



370



390



389



403 & 404



405

# DAVID HANCOCK & Co

A U C T I O N E E R S

## SALE BY AUCTION

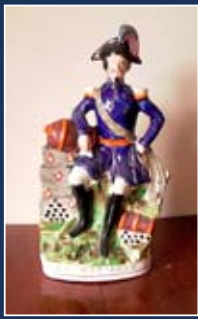
FURNITURE & COLLECTABLES

THURSDAY 3RD JUNE 2010



ST. GEORGE'S HALL BLOCKLEY  
NR. MORETON-IN-MARSH GL56 0BY

VIEW: WEDNESDAY 2ND JUNE 4-8 P.M. & MORNING OF SALE FROM 9 A.M.



101



127



158



116 & 117



193



196



107, 108 & 109



165



118, 119 & 120



163



393



164



268



386



377



220



185 & 186



203



279



314



121, 122 & 123



179



159



195



230 & 229



270



275



234, 231 & 222



132



278



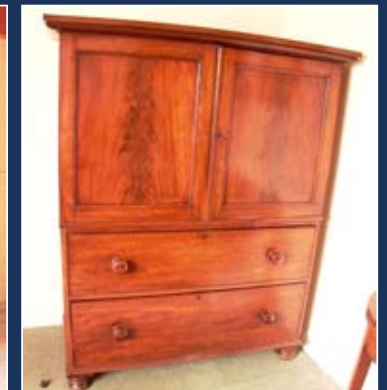
180



398



401



402

## Important

1. Potential bidders will be required to complete a registration form before bidding and may be asked to produce some form of identification if unknown to us.
2. All lots will be sold subject to the Conditions of Sale as exhibited in the sale room.
3. All lots will be at the purchasers risk at the fall of the hammer.
4. CHEQUES WILL NOT BE ACCEPTED FROM PERSONS UNKNOWN TO THE AUCTIONEER UNLESS PRIOR BANKING ARRANGEMENTS HAVE BEEN MADE. Intending purchasers wishing to pay by cheque must ask their bank to forward to us details of their credit worthiness stating the likely sum involved. We do not accept debit or credit cards.
5. NO LOTS TO BE REMOVED UNTIL PAID FOR.
6. All lots to be removed on the day of sale before 6pm unless prior arrangements have been made with the auctioneers.
7. All lots purchased on commission must be collected and paid for by 6pm on sale day (unless prior arrangements have been made).

**SUBSCRIPTIONS:** £10.00 for 8 catalogues for our general sales.

**ADVERTISEMENTS:** These appear in the week prior to the sale as follows Evesham Journal and Antiques Trade Gazette (Advertisement or diary).

**CAR PARK:** Adjacent to the Sale Room.

**REMOVAL:** Purchases must be removed on the day of sale by 6pm. The removal company J B S Services from Shipston-on-Stour Tel: 01608 661416 will be in attendance. Due to increased costs any item taken back to our store for collection at a later date may incur a small charge.

**REFRESHMENTS:** By courtesy of Lisa of Lisa Hall Catering.

**BUYERS PREMIUM 10% PLUS VAT**

## Acknowledgements

David Hancock and Co are most grateful for the substantial contribution to this sale by clients of

### Mark Annett and Co.

Chartered Surveyor and Estate Agents

Braithwaite House

High Street

Chipping Campden

GL55 6HB

Tel: 01386 841622

and further contributions by clients of Gusterson Palmer of Evesham and Smith Gore of Stow-on-the-Wold

### AUCTION OFFICE:

**David Hancock & Co.**

Sheraton House, High Street, Moreton-in-Marsh, Gloucestershire. GL56 0AG.

Tel: 01608 650428 Fax: 01608 650540 Email: [info@davidhancock-co.co.uk](mailto:info@davidhancock-co.co.uk)

Website: [www.davidhancock-co.co.uk](http://www.davidhancock-co.co.uk)

# Furniture & Collectables

*Including:*

**Antique, Reproduction & Modern Furniture  
China, Pottery, Porcelain and Glass  
Silver, Plate, Jewellery, Clocks,  
Interesting Collectables in Wide Variety  
Pictures, A few Books, 47 bottles of Wine  
Two Musical Boxes**

For Sale by Auction

**Thursday 3rd June 2010**

at

**St. George's Hall, Blockley, Nr. Moreton-in-Marsh, GL56 9BY**

View: Wednesday 2nd June 4-8 p.m. & morning of sale from 9 a.m.

Catalogues: £3.00

Auctioneers:

**DAVID HANCOCK & CO**

A U C T I O N E E R S

**Sheraton House  
High Street  
Moreton-in-Marsh  
GL56 0AG**

**Tel: 01608 650428 Fax: 01608 650540  
Saleroom mobile (not during sale): 0789 992 7112  
Email: [info@davidhancock-co.co.uk](mailto:info@davidhancock-co.co.uk)  
Website: [www.davidhancock-co.co.uk](http://www.davidhancock-co.co.uk)**

## Miscellanea

1. Rosewood tea caddy with bun feet (no fittings) 12" x 6".
2. Large copper kettle.
3. Brass handbell.
4. Wall barometer/thermometer in carved wooden case.
5. Spelter figure of knight in period costume – 15".
6. Brass Corinthian style electric lamp.
7. China and brass oil lamp with Vaseline glass shade.
8. Violin in case with bow – P. & H. London.
9. Small articulated doll with opening and closing eyes – 5".
10. Mahjong set in wooden box with sliding lid.
11. Set of 4 black lacquered boxes decorated dogs of fo and with counters.
12. Small bronze jardiniere on stand, 4 small gilt painted wall cherubs and sundry small decorative items.
13. Box of miscellaneous cutlery.
14. Box of sundries.
15. Box including Henselite Home Carpet Biased Bowls, boxed game of Flap Dice, playing cards, etc.
16. Brierley desk top shredder.
17. Georgian rosewood tea caddy with two tea containers and glass mixing bowl, on flat bun feet 12" x 6".

18. Lacquered Oriental sewing box with ivory/bone fittings.
19. Barr and Stroud monocular x 7 used in deer hunting.
20. Davon No. 2 leather clad telescope in leather case.
21. Leather clad telescope – Dolland of London.
22. Archie Andrews ventriloquists doll – 14".
23. Miniature tortoiseshell and mother-of-pearl instruments: mandolin and banjo.
24. Inlaid and crossbanded rosewood workbox.

## Pottery, China, Porcelain and Glass

25. Decorative china including Wedgwood, Carlton ware and Continental figure of a girl in a floral dress wearing a bonnet.
26. Box of decorative and clear glass.
27. 3 cut glass flower vases and 1 other.
28. Wedgwood "Philipa" bone china tea and dinnerware – 60 pieces.
29. Aynsley "Grotto Rose" teaware – 29 pieces and part Royal Worcester gilt decorated tea set – 23 pieces.
30. Royal Worcester "Sheridan" coffee ware: 8 coffee cans, 8 saucers and a cream jug.
31. Coalport "Hazelton" gilt white and red half tea set – 21 pieces.

## Notes

# Notes

32. Spode bone china "Green Velvet" green, white and gilt coffee set comprising coffee pot, 6 cups, 6 saucers and cream jug.
33. Royal Crown Derby "Derby China" half tea set – 21 pieces.
34. Royal Worcester "Festive Garden" cakestand with knife, still in original box and wrapping.
35. Pair of Royal Worcester egg coddlers in box, Royal Worcester grip jar and dish in box, pair of Royal Worcester pin trays in box and cake knife with Wedgwood handle.
36. Set of 10 Waterford cut glass whisky glasses.
37. Set of 6 cut glass sundae dishes and sets of 6 and 5 glass grapefruit dishes.
38. Set of 10 lemonade/lager glasses.
39. 6 brandy balloons and 5 (4 and 1) cut glass mugs with handles.
40. 8 champagne flutes, 6 Brierley stemmed sherries and set of 6 Webb cut glass sherries.
41. Assorted drinking glasses.
42. Assorted glassware.
43. Set of 8 German china gilt edged wall plates depicting birds.
44. 6 blue and white Wedgwood style plates "Love Themes from the Grand Opera". Limited editions.
45. Royal Worcester china viz: 3 flan dishes, 2 souffle bowls, 4 ramekins and pair of gilt edged egg cups with "hen" covers.
46. Coalport strawberry dish with cream jug and sugar bowl and other decorative china.
47. 2 large brown mixing bowls, German Romertopf clay dish with cover and brown casserole with lid.
48. Glass fruit set, 3 glass fruit bowls and 2 coloured avocado dishes.
49. Staffordshire "Losol Ware" rose pattern bowl.
50. Royal Albert bone china photograph frame, Coalport china wall clock, 8 small bone china flowers, Stuart crystal vase, small Coalport flower wall plaque "July", china soap dish with rude lady and gold anchor mark, Italian Fioreline bowl, pair of glass scent bottle with stoppers and Wedgwood diamond shape pin tray.
51. 15 crested china items including Goss, Tuscan and Arcadian.
52. Arklow floral decorative dinnerware – 38 pieces.
53. Staffordshire New Hall "Boumier Ware" circular dish decorated birds and flowers – 12".
54. Shelley floral decorated teaware.
55. Floral Oriental design jardinière, Portmeirion jardinière and black Wedgwood jardinière.
56. Square cut glass whisky decanter with stopper.
57. 4 other glass decanters with stoppers.
58. Royal Doulton character jug "Sairey Gamp".
59. 5 Copeland Late Spode rose pattern plates – 10½".

60. Staffordshire blue and white willow pattern dish 18" x 14½".
61. Blue and white Chinese octagonal jardinière decorated flowers.
62. 2 blue and white jardinières, one decorated figures and the other birds and flowers.
63. Set of 3 19th Century German dark green rummers with applied raspberry prunts.
64. Set of 3 Victorian mid green engraved wine glasses with grapevine decoration.
65. Box of decorative tea and coffee ware.
66. Blue and white pierced china bowl, 2 small fish dishes and mug.
67. Meat dishes, game pie dish and sundries.
68. Victorian stemmed wine glass and Victorian wine glasses with inscriptions.
69. 18th Century blue and white dish decorated flowers and butterflies.
70. 19th Century Chinese blue and white dish decorated flowering bush and birds.
71. Pair of Staffordshire dogs,
72. Pair of gilt and red Wood and Son decorative plates with floral panels – 9" and other decorative plates.
73. Floral china lagonda.
74. Royal Worcester 2-handled mug decorated roses c1900.
75. Royal Worcester plate depicting Highland Cattle – H. Stinton, badly broken and repaired.
76. Parian group with figures seated at a table and sharing a joke and entitled "A Capital Joke".
77. Floral china comport with Van Dyke pattern.
78. Pair of china 3-branch candelabra supported by boy and girl in period dress, bearing a blue anchor mark and initials EBS.
79. Box of decorative china including ornament of girl with goose.
80. Victorian china jug with grapevine decoration, brown glazed jug with animal decoration, blue and white mug with drinking scene and pottery vase.
81. Pair of highly decorative Oriental vases with crazed background and decorated flowers and birds – 16".
82. Marble effect figure of seated boy reading – 18" a.f.
83. Continental china comport with latticed bowl supported by boy and girl climbing and one other dish on stand, both a.f.
84. Pair of white glazed chariot shape bowls with lady and gent a.f. and one other white glazed figure a.f.
85. 8 various figures for restoration and group of lady and gentleman on bench.
86. Pair of Schumann heart shape china dishes with pierced sides, 2 flower ornaments, "Dresden" ashtray with applied rose decoration and small porcelain plaque.

398. French vitrine with gilt brass mounts, serpentine glass fronted door, side panels and shelves, cupboard under with painted panel door, short cabriole legs and marble top 60" high x 30" wide c1900. Photograph.

399.

400.

401. A good quality reproduction mahogany bureau with well fitted interior, two short and three long drawers with brass drop handles, cabinet over with astragal doors, broken arch pediment to top in Georgian style – 44½". Photograph.

402. Victorian mahogany linen press with two drawers and cupboard with two sliding trays, wooden knobs – 46". Photograph.

403. Superb quality oak refectory style dining table on heavy turned legs and stretcher base in 17th Century style – 10' x 3'3". Photograph.

404. Set of 10 (2 carvers and 8 single) oak dining chairs with loose drop in seats and pierced splat backs in Chippendale style. Photograph.

405. Reproduction oak dresser with 3 drawers and cupboards under with panelled doors, rack over with 5 small drawers, shelves and small cupboards in 18th Century style – 54". Photograph.

406. Reproduction oak dresser with 4 drawers to match previous lot – 63".

407.

## Outside

408. White marble effect statue of female bather – 40".

409. Pair of composition pineapple garden ornaments.

410. 3-tier composition garden fountain with girl figure to top.

END OF SALE

87. Pair of Continental china candlesticks with lady and gent and floral decoration.

88. Cut glass ships decanter with stopper.

89. 12 items of blue glass.

90. Blue, gilt and floral decorated jug "Golden Moon" with exotic birds H.H. & Co. and blue ground Shelley vase decorated Oriental scene.

91. Quantity of Adderleys "Dresden" tea and breakfast ware.

92. Quantity of "Dresden" pattern china coffee ware.

93. Quantity of "Dresden" pattern assorted china.

94. 12 gilt edged and floral decorated tea cups and saucers – T. Goode and Son.

95. Large Art Deco vase/jug signed Charlotte Rhead

96. Pair of Staffordshire gilt and white dogs – 11½".

97. Pair of black and white ditto – 9½" and one bronze coloured dog.

98. Two Staffordshire figures of two dogs on a barrel – 8½".

99.

100.

101. Staffordshire figure of E.M. Napoleon – 15½". Photograph.

102. Staffordshire figure of two hounds with deer.

103. Pair of Continental figures of Lady and Gentleman in period dress – 10".

104. Set of 3 graduated Grimwades china jugs decorated flowers.

105. Royal Doulton coffee set decorated flowers.

106. Lladro figurine of Geisha girl with flowers – 10".

107. Lladro figurine of girl with parasol up – 9". Photograph.

108. Lladro figurine of girl with parasol down – 8". Photograph.

109. Lladro figurine of girl with folded parasol – 7". Photograph.

110. Lladro figurine of Dutch girl with oranges – 7".

111. Lladro figurine of boy with bird – 9" long.

112. Lladro figurine of boy with boat – 9½".

113. Lladro figurine of female head – 9".

114. Lladro figurine of winged boy with pipe – 6½".

115. Lladro figurine of professor with stethoscope – 16".

116. Royal Worcester figurine of "Lady Violet" No. 243/9500 – 9½". Photograph.

117. Royal Worcester figurine of "The Painted Fan" No 724/12500 – 9". Photograph.

118. Royal Worcester figurine "Caroline" – 7½". Photograph.

119. Royal Worcester figurine "Beatrice" – 7½". Photograph.

120. Royal Worcester figurine "Sweet Anne" by F.G. Doughty. No. 3630 – 7". Photograph.

121. Royal Doulton bone china figurine "Veronica" HN1517 – 8". Photograph.
122. Coalport bone china figurine "A Meeting at Ascot" No. 158/9500 – 9½". Photograph.
123. Coalport bone china figurine "Perfect Rose". No. 921/9500 – 8½". Photograph.
124. Wedgwood and Co. hand painted figurine of lady with a feather fan – 8½" and one other figurine of a lady.
125. Wedgwood figurine of lady with fan "Enchanted Evening" – 8".
126. "Dresden Art" figurine of ballroom dancers – 7½" and figurine of ballerina a.f.
127. Pair of Royal Worcester china female busts "Night" and "Day" raised on plinths total height 14". Photograph.
128. Nao group of boy and girl on see-saw.
129. Royal Crown Derby group "Blue Tit with Chicks" – Y. Braerly.
130. Royal Doulton figure of Terrier HN1159 and Royal Doulton figure of French Poodle HN5631 a.f.
131. Small Royal Doulton figurine of girl reading with puppy HN2238.
132. 2 small Sitzendorf figures of babies with dogs on cushions. Photograph.
133. Lladro green ground vase with dragon design – 10".
134. Silver pill box to commemorate The Prince of Wales and Lady Diana Wedding and 5 others.
135. Naples group of boy and girl, ditto boy on goat and 3 others a.f.
136. Pair of miniature dogs marked gold anchor.
137. Pair of pottery figurines "Bagpiper" and "Mate".
138. Continental figurine of cherub with fruit and Italian figure of boy with violin.
139. Glazed figurine of lady with racquet a.f., Sitzendorf figurine of girl with basket a.f., figurine of boy with stick marked crossed swords and Dresden musicians group.
140. Minton floral decorative vase and 7 other bone china items.
141. Moorcroft vase, dark blue ground with anemones – 4½".
142. Royal Worcester Nuthatch. No. 3334 and 4 other bird ornaments.
143. Late 19th Century Derby coffee can with saucer.
144. Masons Commemorative dish Millennium 195/950.
145. Collection of decorative Continental cups and saucers and miniature cups and saucers.
146. 4 circular bone china lidded boxes and 4 circular wooden boxes with musical lids with birds.
147. 4 blue and white china Dutch buildings KML by Bols.
148. Pair of Spode plates with floral decorative borders.
- 149.
- 150.
376. Pair of French circular tables in kingwood and mahogany and with brass mounts and swags, rope beading to top, hexagonal columns and cinque form bases with paw feet – c1910, 21" diameter. Photograph.
377. Brass mounted mahogany jardinière stand on three legs with horse's head motifs and inlaid marquetry top. Photograph.
378. A delicate French crescent shaped mahogany table with brass mounts, swing out frieze drawer and tri-form galleried shelf under – 16½".
379. Pair of French brass mounted kingwood and mahogany tables each with two drawers – 14".
380. Mahogany cocktail cabinet with decorative metal hinges and escutcheons on a base with two drawers, cabriole legs, pad feet, carved foliate and shell frieze.
381. Mahogany music Canterbury on short turned legs and brass castors in late Georgian style.
382. Edwardian carved mahogany display table on square tapering legs 28½" x 17".
383. Pair of Victorian mahogany occasional/nursing chairs with cabriole legs and tapestry seats.
384. Regency style mahogany open armchair.
385. Walnut freestanding corner cupboard with glazed top – 25".
386. Pair of late 19th Century winged armchairs in buttoned classical design fabric on heavy carved walnut cabriole legs and claw feet. Photograph.
387. Victorian inlaid walnut tip top dining table on pillar and quadruped base with knurled feet and castors 44" x 57". Photograph.
388. Set of 6 (2 carvers and 4 single) upholstered dining chairs with cabriole legs and pad feet in Georgian style.
389. Regency style mahogany chiffonier with open brass latticed doors with curtain backs, brass handle to each side and marble top – 36". Photograph.
390. Late Georgian mahogany chest of 4 long drawers with oval brass drop handles, reeded edge to top and with splayed feet – divides into two each half with carrying handles – 37½". Photograph.
391. Late Georgian inlaid mahogany shield shape dressing table mirror on base with three drawers – 19".
392. Pair of walnut headboards with floral tapestry panels with gilt foliate surrounds – each 42".
393. 18th Century panelled oak mule chest with two drawers and brass drop handles – 57½". Photograph.
394. Set of four Victorian mahogany dining chairs with turned legs and striped gold seats.
395. Oak carver chair and 6 similar high back dining chairs in Queen Anne style.
396. Small oak dresser with turned legs and shelf under, carved panel back in 17th Century style – 37½".
397. Edwardian inlaid and crossbanded rosewood occasional table with shelf under 16" square.



348. Fire screen with wool tapestry panel.
349. Pair of Victorian mahogany and upholstered square footstools.
350. Square pouffe with fruit design fabric.
351. 2 yew-wood tripod wine tables and 1 other.
352. 2 brass standard lamps and brass towel rail.
353. Cream and gilt decorated kidney shape dressing table with plate mirror top, freestanding triple mirror and stool – 45”.
354. Cream and gilt decorated chest of 5 drawers – 34” to match previous lot.
355. Narrow mahogany chest of 6 drawers with brass drop handles in Georgian style – 18”.
356. 1920’s oak workbox.
357. Mahogany kneehole pedestal desk with tooled leather top, central and 8 side drawers with brass drop handles in Georgian style 48” x 24”.
358. Oval mahogany dressing table mirror.
359. Mahogany effect occasional table with drop flap and swivel top.
360. Mahogany two tier tea trolley in antique style.
361. Wine/bottle rack.
362. Double divan base with interior spring mattress, padded headboard and complete with bed cover, drapes and fittings.
363. Mahogany square washstand/ bedside table.
364. Set of 8 beech frame dining chairs with brown bycast leather upholstered seats and backs.
365. 19th Century panelled oak corner cupboard with brass “H” hinges and shaped interior shelves – 40”.
366. Victorian mahogany shaped back armchair with knurled arms and cabriole legs upholstered in green dralon. Photograph.
367. Georgian mahogany converted commode with shaped apron frieze 20” x 18”.
368. 19th Century mahogany night commode 18½” x 17”.
369. Late Georgian inlaid mahogany “D” shape foldover and swivel top tea table on square tapering legs – 36”.
370. Edwardian inlaid mahogany kidney shaped tray with musical motif. Photograph.
371. Set of 4 mahogany dining chairs with cabriole legs and ball and claw feet in Chippendale style.
372. 19th Century oak and crossbanded corner cupboard with panelled door.
373. Mahogany china display cabinet on stand with two drawers and cabriole legs, carved decoration to frieze and top – 38”.
374. French oval occasional table with gilt mounts and with decorative inlaid top 22” x 15”.
375. French style mahogany occasional table with shelf under and with brass gallery and mounts 18” x 13”.
151. Caverswall plate Queen Elizabeth II at Temple Hall 1981, 2 Spode Christmas plates 1970 and 1971 and Wedgwood plate Royal Birth 1982.
152. Pair of silver mounted cut glass sherry decanters London 1963.
153. Silver mounted cut glass square whisky decanter 1967. Photograph.
154. Cut glass sherry decanter with stopper.
155. Smaller ditto and square cut glass whisky decanter.
156. 2 Italian jugs, one in the shape of a lemon and the other a bunch of grapes.
157. Gilt metal table centrepiece with cut glass bowl and 4 arms each with glass candleholder.
158. Ovoid glass claret jug with floral decorated plate mounted top and handle – Elkington and Co. 13”. Photograph.
159. Ruby and white overlaid glass lustre with 10 cut glass triangular droppers. Photograph.
160. Pair of flat triangular shape cut glass flower vases – 12”.
161. Lladro bowl decorated flowers – 7”.
162. Pair of Royal Worcester floral decorated horn shape wall vases – 8½”.
163. Royal Staffordshire “The Biarritz” 1930’s china Bizarre by Clarice Cliff 8 items viz: 3 graduated dishes, sandwich plate, cream jug and 3 side plates, Photograph.
164. Aynsley gold bordered china with fruit design panels: 8 dinner plates, 8 dessert plates, 8 side plates and 8 fruit bowls. Photograph.
165. Pair of pretty Venetian blue glass vases overlaid with gilt and floral decoration – Rizzoli Venezia – 8”. Photograph.
- 166.
- 167.
- 168.
- 169.
- 170.

## Silver and Plate

171. Engraved plated table mats 2 x 9” x 8 x 8”.
172. 8 engraved table mats 7” and set of 6 plated glass mats in stand.
173. Case of 6 plated teaspoons and knife and other plated items.
174. Case of stainless steel tea knives with packed silver handles and case of 6 silver teaspoons Sheffield 1958.
175. Case of 6 silver coffee spoons with floral enamelled bowls in case, set of Danish Sterling enamelled coffee spoons in case and ditto pastry forks with enamelled handles.
176. Pair of silver sweetmeat stands Birmingham 1909.
177. Pair of small silver dishes London 1958. Maker R.C.
178. Modern silver christening mug “Pauline”.

179. A pretty pierced silver dish with swing handle and opaque glass liner on three ball and claw feet Sheffield 1891. Photograph.
180. Set of 10 silver spoons "The Queens Beasts" to commemorate Queen Elizabeth's Silver Wedding in presentation case. Limited edition set 1395/2000. Photograph.
181. Octagonal plated breakfast dish with cover and circular ditto with cover.
182. Engraved oval plated 2-handled tray and plated three tier stand.
183. Embossed Sterling silver three piece brush and mirror set, one other silver backed mirror and silver backed comb.
184. Set of 12 plated wine glass mats.
185. Pierced silver sugar caster with blue glass liner, Birmingham 1934. Photograph.
186. Silver sugar caster Birmingham 1933 and 1 other silver topped caster. Photograph.
187. Embossed plated three piece tea service and pierced silver dish.
188. Pierced silver and glass scent bottle Birmingham 1922.
189. Pair of modern silver wine coasters.
190. Oblong entrée dish with cover and beaded edges.
191. Oval dish with beaded decoration and cover and one other plated entrée dish and cover.
192. Oval plated entree dish and 3 oval dishes.
193. Pair of silver sauceboats on shell feet London 1959 – 5ozs. Photograph.
194. Silver sauceboat on shell feet London 1913 – 7ozs.
195. Silver coffee pot with pineapple finial Birmingham 1938, 12 ozs including handle. Photograph.
196. Three piece silver tea service Birmingham 1927, 36 ozs including knob and handle. Photograph.
197. 12 large and 12 small stainless steel knives with silver pistol grip handles Sheffield 1958.
198. Silver flatware London 1921-2, with crest and comprising: 12 large forks, 12 small forks and 12 spoons – 56 ozs.
- 199.
- 200.
201. Set of 12 silver table spoons with crest Sheffield 1922 – 26 ozs.
202. Set of 6 pairs of silver fish knives and forks with pistol grip handles, Sheffield 1960. Makers G. & H.
203. Silver three piece tea service Birmingham 1904, 19 ozs including knob and handle. Photograph.
204. Small silver 4-slice toast rack Sheffield 1958, silver mustard with spoons and silver top jar with spoon.
205. Pair of engraved Georgian silver sugar tongs Makers SG & EW.
206. Canteen with 12 pairs of engraved plated dessert knives and forks with mother-of-pearl handles.
318. Masons style china electric table lamp.
319. Gilt and onyx Corinthian column electric lamp with shade.
320. Brass standard lamp with reeded column.
321. 3 alabaster and gilt metal electric table lamps.
322. Pair of small candle style alabaster and gilt electric table lamps and 1 other.
323. Bronzed standard lamp with decorated enamel shields.
332. Narrow oak bookcase 13" and one other.
333. Regency style mahogany sabre leg armchair.
334. Single elm spindle back chair.
335. Antique oak drop leaf gate-leg dining table.
336. Victorian crossbanded mahogany bow fronted chest of 2 short and 3 long drawers with brass ring handles – 43½".
337. Victorian circular dressing table mirror in mahogany frame with inset marble base.
338. Pair of mahogany dining chairs in Hepplewhite style and similar armchair.
339. Mahogany bedside table with shelf and drawer under 15" x 14".
340. 19th Century mahogany chest of 4 long drawers with brass drop handles.
341. Mahogany dressing table mirror with two drawers.
342. Windsor armchair in elm with stick and blind wheel back.
343. Mahogany bedside cupboard, former commode.
344. Pair of early Victorian mahogany dining chairs with turned legs.
345. Brass fronted electric fire with coloured glass coal effect in Adam style.
346. Yew-wood gate-leg occasional table.
347. Yew-wood square table with drawer to base.

## Mirrors

324. Wall mirror in gilt painted reeded and beaded frame.
325. Bevel plate wall mirror in oval gilt painted frame 23" x 20".
326. Wall mirror in very ornate gilt painted frame with beaded, scroll and foliate wide frame 34" x 44" plus foliate mount.
327. 19th Century Adam style mirror with central and 4 side panel mirrors, decorated urn and garland swags – 35" x 39".
328. Gilt frame wall mirror with shell motif and 2 others.

## Furniture

329. Victorian gold three seater settee.
330. Mahogany three tier folding cakestand.
331. Rosewood occasional table on slender turned legs.

289. Floral wool tapestry wall hanging 57" x 34".
290. Bordered patterned Persian style rug.
291. 2 small Chinese rugs.
292. Silk wall hanging and embroidery and crocheted items.
293. Bordered patterned Persian style runner 9' x 3' and 1 other Persian style rug.

## Books

294. Box of books on cookery.
295. Ditto.
296. Box of books on animal life and miscellanea.
297. Box of books mainly novels.
298. Box of books on flowers and gardens.
299. Box of books on antiques and related.
300. Box of books on travel.

## Pictures

301. Framed tapestry of figures in garden.
302. Smaller ditto.
303. Set of 6 framed coloured coaching prints.
304. Painting of flowers in oval gilt frame, pair of miniatures of ladies, wax plaque of Richard Mead, circular embroidered picture of woodland with flowers and interior scene with piano player.
305. Assorted pictures.

306. 2 framed coloured humorous prints from the Dirty Dogs of Paris Series by Boris O'Klein, signed in pencil.
307. Framed oblong glazed tile Elizabethan lady on horseback and framed clay plaque of a horse.
308. Oil on panel still life "Grapes and Wine" in gilt frame, unsigned. 10" x 8".
309. Coloured print "Spray of Flowers with Berries" by Jean Scott Tonge.
310. Oil on canvas "Paysage Pries de Cagnes" with trees in blossom in the foreground and buildings and the sea in the distance behind, signed Ely Laumonier 20" x 26". Photograph.
311. Oil on canvas "Mass Prez d'Egolize" depicting buildings with sea in the background, signed Ely Laumonier. 22" x 25½". Photograph.
312. Oil on canvas depicting primitive buildings with mountains in the background, signed Francisco Chou, 1869. 14½" x 21".
313. Oil on canvas French Street scene, signed Roland Davies. 20" x 30". Photograph.
314. Framed coloured artists proof print depicting three Spanish Ladies in flowing dresses, signed in pencil W. Russell Flint 20" x 28". Photograph.

315.

316.

## Lamps

317. Floral decorated china lamp on gilt metal base.

207. Engraved plated samovar with tap and beaded decoration.
208. Plated fruit dish with swing handle and cast grapevine border and another plated cakestand with gadroon edge.
209. Engraved oval plated tray with foliate and scroll border on 4 scroll feet 17" x 12".
210. Circular plated tray with ball and claw feet and 1 other.
211. Box of plated items and metalware.
212. Collection of small silver items viz: caddy spoon in case with Prince of Wales motif, silver mounted glove stretchers, case of cocktail sticks with cockerel motif, 3 butter knives, bread fork, 3 spoons and perfume bottle with silver top.
213. Georgian silver salt on 3 shell and pad feet London 1764.
214. Silver mustard, assorted plated condiments, sugar caster and other plated items.
215. Silver faced travelling clock.
216. Circular plated tray with shell and scroll border and 1 other.
217. Circular EPNS tray with grapevine border.
218. 4 silver medals Hackney Horse Society and 2 others.
219. Good quality half fluted 5 piece silver plated tea service.
220. Oblong glass spirit decanter with lockable collar and faceted stopper, Birmingham 1924, complete with key. Photograph.

221. Cut glass scent bottle with silver mounted top (no stopper) and small bulbous cut glass scent bottle with silver mounted top (no stopper).
222. Leather clad travelling inkpot with engraved silver hinged lid. Monogram CCG. Birmingham 1868. Photograph.
223. Engraved silver cigarette case, silver matchbox holder Chester 1911 and Sterling silver cigar cutter.
224. Circular silver powder compact with engine turned top Birmingham 1923, plated ditto with embossed scene to top and 1 other.
225. Pair of small green lustre vases with silver rims, one other 2-handled vase with silver rim and small china bulbous bowl with silver top.
226. Deer's hoof with plated matchbox top E.B. B-H, Glenshee Sept 10th 1913.
227. Silver cigarette box Birmingham 1963.
228. Cut glass perfume bottle with Sterling silver mounted top.
229. Ruby glass scent bottle with embossed silver top Birmingham 1898 and clear glass ditto with embossed top. Photograph.
230. Glass perfume bottle with blue overlay and embossed white metal top depicting cupid. Photograph.
231. Ivory paper knife with silver mounted magnifying glass top and carved bone paper knife. Photograph.
232. 2 silver topped dressing table nail polishers and 2 silver pill boxes with silver tops.
233. Miniature crested china mug City of London with silver rimmed top – London 1910.

- 234. Ivory clad expandable card case with monogram CB on silver inset. Photograph.
- 235. Silver plated matchbox holder modelled as a begging dog.
- 236. 3 pairs of hallmarked silver tongs.
- 237.
- 238.

## Jewellery

- 239. Jewel box and quantity of beads and jewellery.
- 240. Pair of 9ct white gold "Cross" earrings set 24 diamonds.
- 241. 9ct gold vesta case – Birmingham 1920.
- 242. Good quality 9ct gold mounted cameo brooch/pendant.
- 243. Five 9ct gold stone set ladies dress rings.
- 244. Fine quality 9ct gold engine turned decorated pill box.
- 245. 18ct gold and platinum solitaire diamond engagement ring.
- 246. White gold and diamond pendant on white gold chain.
- 247. 9ct white gold peridot, topaz, amethyst and citrine necklace.
- 248. Victorian oval silver locket c1895.
- 249. 9ct gold half eternity diamond ring with "I love you" swivel.
- 250.
- 251. Jewellery box, coins, etc.

- 252. 19th Century gilt decorated porcelain perfume bottle (possibly Worcester).
- 253. Victorian gold enamel and single pearl ring.
- 254. Fine quality single strand pearl necklace with 9ct gold clasp.
- 255. Large silver designer ring set princess cut amethysts.
- 256. Victorian 15ct gold enamel and seed pearl mourning ring.
- 257. Ladys 18ct white gold ring set 5 diamonds.
- 258. Silver band set solitaire diamond.
- 259. Pair of 9ct gold cufflinks.
- 260. Commemorative silver "Queen Mary" brooch and earrings.
- 261. Five 9ct gold stone set ladys dress rings.
- 262. Gents stainless steel automatic wrist watch.
- 263.
- 264.
- 265.

## Clocks

- 266. Small brass carriage clock – 5".
- 267. French brass carriage clock for repair.
- 268. Late 19th Century engraved gilt brass carriage clock with porcelain panel sides depicting figures in landscape, striking on gong with push repeat – 5". Photograph.

- 269. Mid 19th Century French gilt brass and white marble mantel clock supported by two bronze cherubs playing musical instruments, enamel dial decorated with floral swags, foliate decoration to base with lion paw feet and surmounted by bird with torch and arrows – 10" high. Stamp on back Medaille D'Argent Vincenti et Cie 1855. Photograph front cover.
- 270. Late 19th Century gilt brass mantel clock with porcelain panels to four sides of base, garland surmount and enamel dial – Henri Marc of Paris – 8". Photograph.
- 271. Regency style inlaid mahogany balloon shape clock with inset oval blue and white Wedgwood style plaque – 10".
- 272. 20th Century wall clock with steel dial, brass heraldic lion surmount and other brass decoration and barley twist columns, striking on bell with man supporting universe, brass ball weights.
- 273. Wall barometer/thermometer in gilt painted ornate frame.
- 274. Edwardian inlaid mahogany mantel clock with presentation plaque – 9½".
- 275. Alabaster mantel clock with gilt mounts and brass and enamel dial – Maple and Co of Paris, Marti movement and striking – 11". Photograph.
- 276.
- 277.

## Musical Boxes

- 278. 19th Century musical box in stained pine case with inlaid rosewood hinged lid, playing six airs – Fabrique de Geneve. No. 25882. 17" x 8" x 6". Photograph.
- 279. 19th Century musical box in stained pine case with inlaid rosewood hinged lid, playing eight airs with five bells in sight – Fabrique de Geneve. No 1330. 23" x 11" x 10". Photograph.

## Wines

- 280. 6 bottles of 2007 Munsterer Romerberg.
- 281. 6 bottles of 2006 Burg Layer Schlosskapelle.
- 282. 5 bottles ditto.
- 283. 2 bottles of 2003 Saulheimer Domherr plus 2 others.
- 284. 2 bottles of 2007 Bornmeimer Adelberg, 3 bottles of 2007 Bretzenheimer Pastorei and 2 bottles of 2003 Golden Goose Estate Leonards Reserve.
- 285. 5 bottles of 2003 Rivaner Kabinett.
- 286. 3 bottles 2007 Weinmeimer Kirchenstuck and 3 bottles 2007 Etschel Rose.
- 287. 4 bottles of Kangaroo Point Cabernet Merlot.

## Textiles

- 288. Weaving loom with unfinished tapestry and materials.